

CERTIFICATE OF LOCATION OF GOVERNMENT CORNER

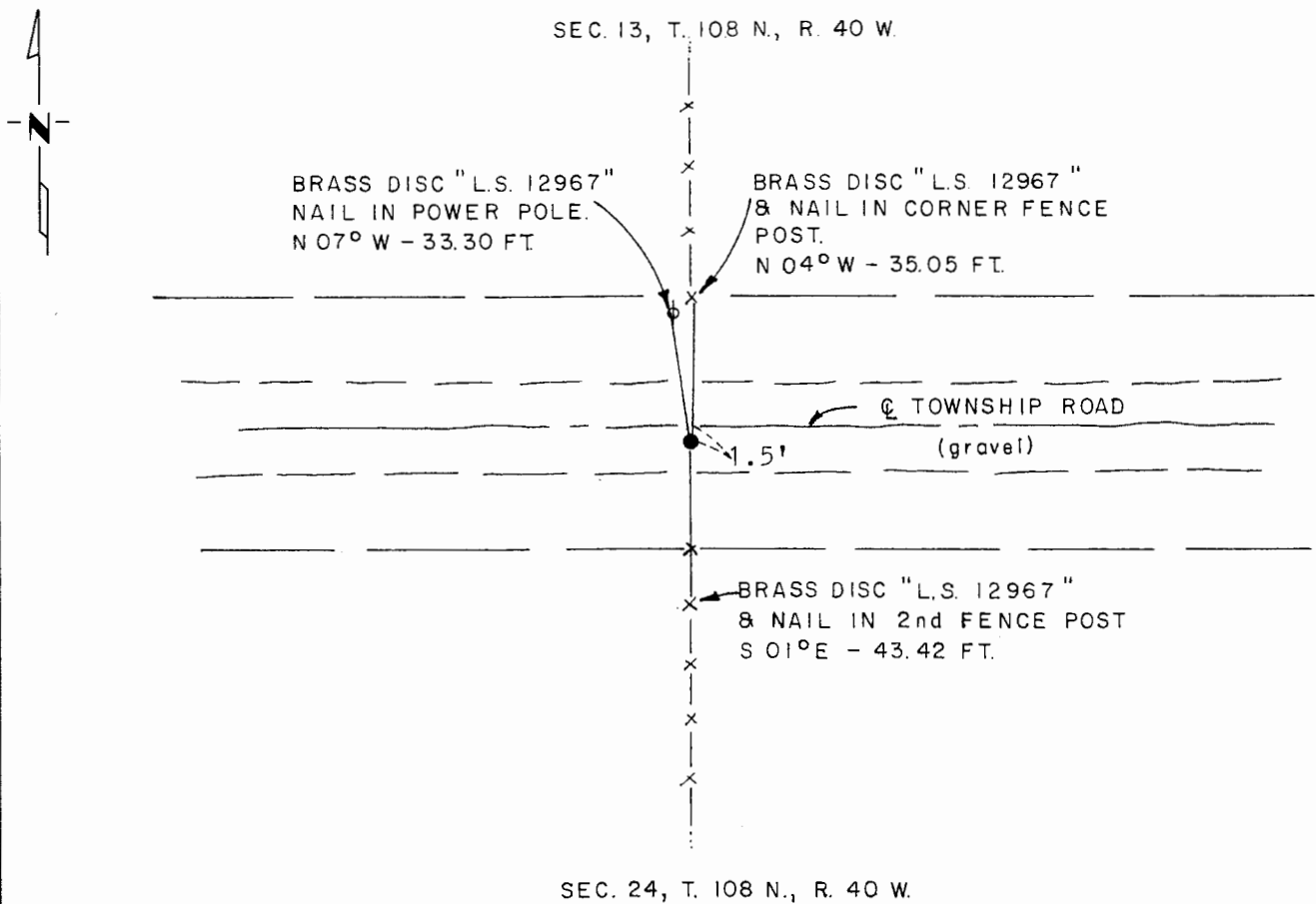
North Quarter Corner of Section 24, Township 108 N., Range 40 W., 5th P.M.

STATE OF MINNESOTA, County of Murray

At the corner location shown on the sketch:

- On 10-30-80 found a stone in line with north-south fences
DATE
- left monument as found, lowered monument, removed monument (explain)
- On Oct. 30, 1980 placed a 1/2" iron reinforcing bar with "L.S. 12967" cap over
DATE said stone.

SKETCH OF REFERENCE TIES



I hereby certify that this document and the data contained herein was prepared by me or under my direct supervision.

Gay D. Mat
SIGNATURE 12/28/81
DATE

Registration No. 12967

Land Surveyor, Professional Engineer
 County Surveyor, County Engineer

OFFICE OF THE COUNTY RECORDER
County of Murray

I hereby certify that this document was filed in the Co. Recorders office at 10 A .M. on the 18th day of February A.D. 19 82

County Recorder *Willard W. Orme*
By _____, Deputy

DOCUMENT NO. _____